



squadrasportiva
by **NOVITEC**



Mounting Guidelines

Powerail 5
2.0 JTD**M** 16V



abarthsportiva



alfasportiva



fiatsportiva

Attention! Important Information!!!



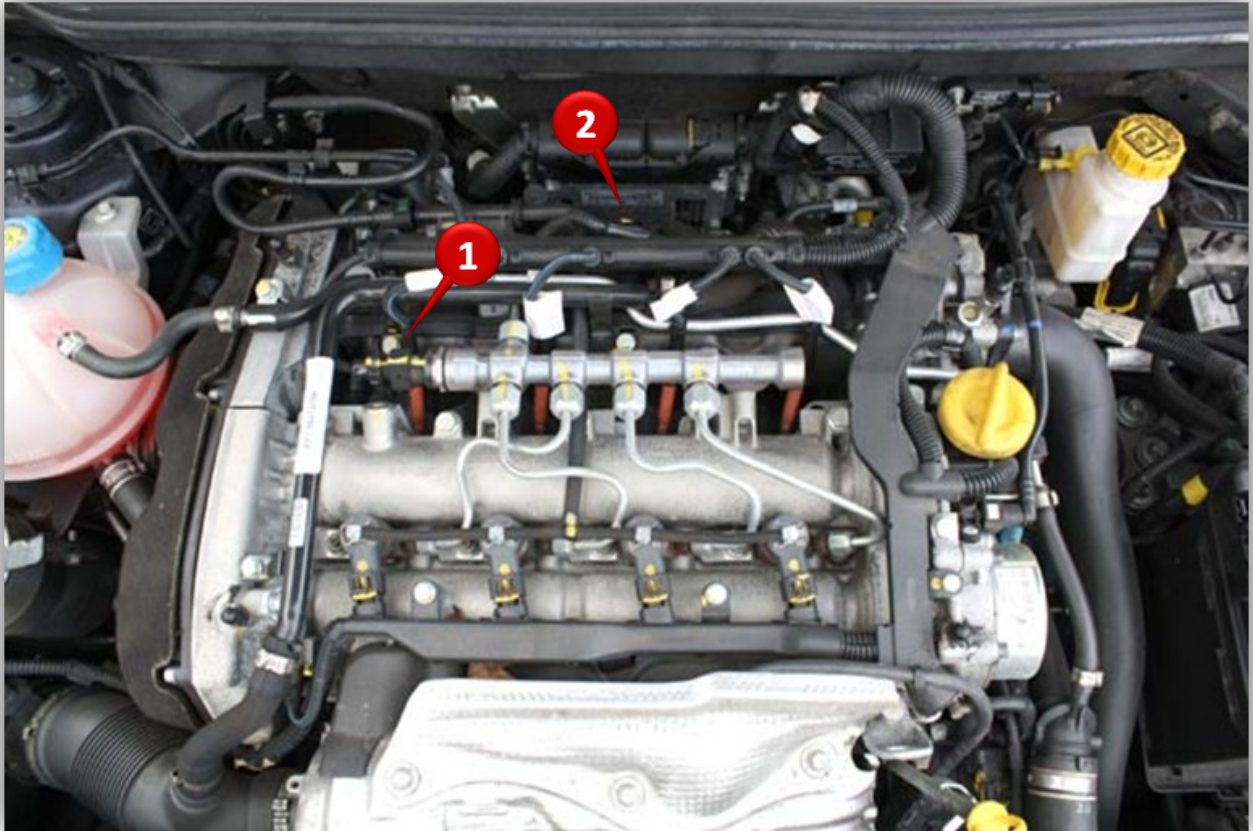
1. Switch off the ignition before installation!
2. Remove the ignition key!
3. Then disconnect the battery!
4. Wait at least 5 minutes prior to the installation!
5. The steps 1-3 are to be observed in that order!



To prevent damage to the cars electronic components,
it is imperative that you have taken appropriate measures
to ensure against electronic discharge

The Powerrail 5 must be installed where it is absolutely waterproof
and free from vibration away from the engine.

In no case are you to carry out any modifications to the Powerrail 5.



Overview:

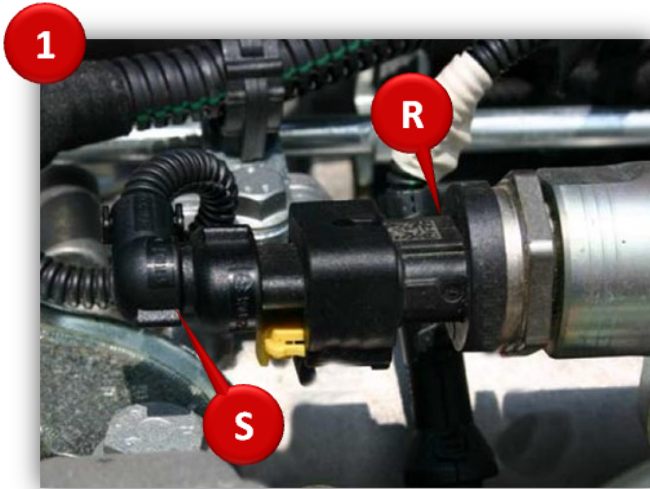
Rail pressure sensor (1)
Boost pressure sensor (2)

Preparation:

Lay the individual strands of the harness to the
Associated plug connections.

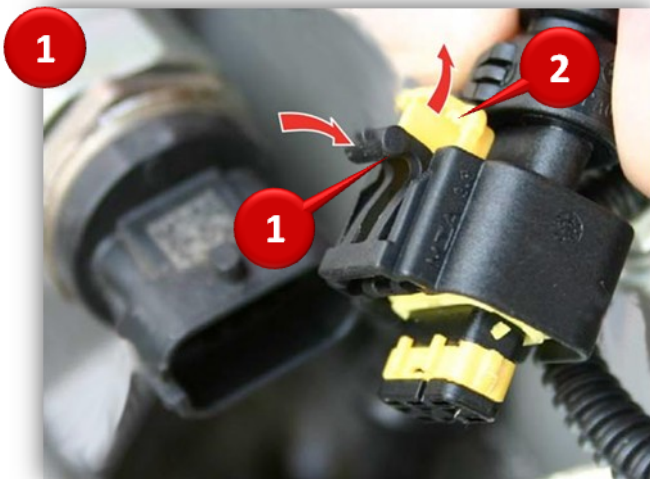
Remove the engine cover.

Depending on the model and year of the car , the cover is either held
in place with screws or pressed into place.



Loosen the rail pressure sensor connector (S) from the rail pressure sensor (R)

The rail pressure sensor is located on the top of the engine on the end of the common rail pipe.

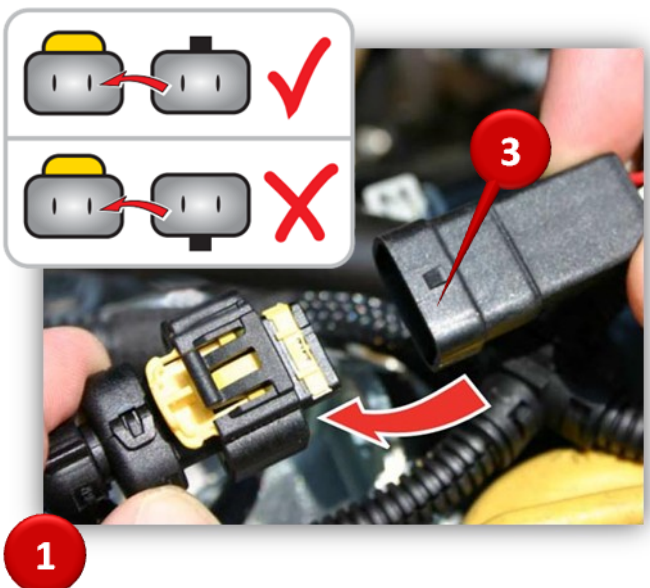


The rail pressure sensor connector (S) is doubly secured against eventual slipping

To remove the plug from the rail pressure sensor (R), you must first pull out the yellow bar (2) from the plug. The bar is fixed to the plug and cannot fall off.

Now the black lever (1) can be pushed down onto the plug.

The plug can now be removed.



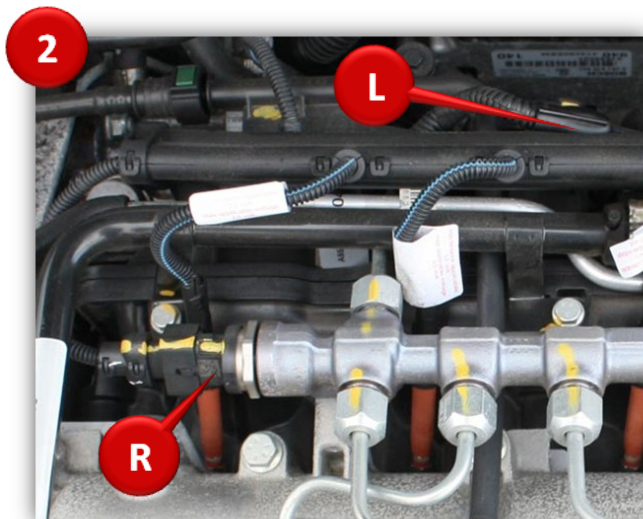
Note: The connector of the wire harness that is connected to the original rail pressure sensor connector is provided on the upper side with a plastic coding (3).

This code must be on the same side as the yellow locking bar when assembling, otherwise if the plug is incorrectly fitted the engine will not start!

The Y-piece of the Powerrail 5 harness is now to be inserted onto the respective plugs or sockets.

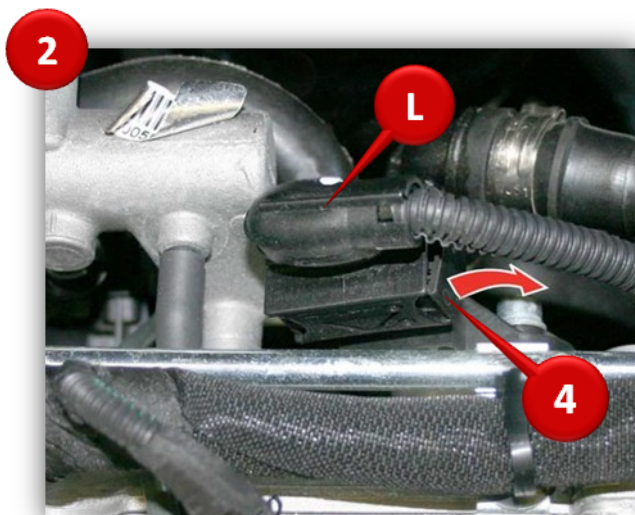


The plug of the new wire harness is now attached to the rail pressure sensor (R).



In the second step, the wire harness is connected to the boost pressure sensor (L)

The boost pressure sensor (L) is located on the top of the engine above the rail pressure sensor (R).



Unlock the connector of the charging pressure sensor (L), by pushing the safety catch (4) aside.

Caution! Depending on the model and year of the car there are different connector types.

This picture is only a sample!!!

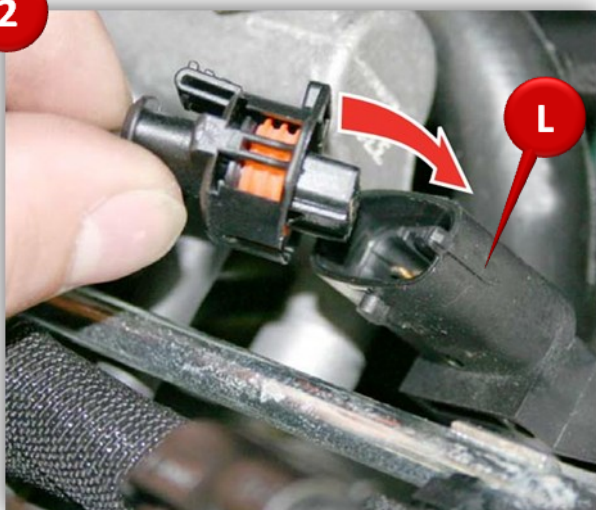
2



Disconnect the connector from the boost pressure sensor and connect it to the appropriate connector of the wire harness.

Then, push the safety slide lock back into position again to lock the connector.

2



Attach the plug of the wire harness to the boost pressure sensor (L).

The plug must click into position to ensure that secure connection is guaranteed.

Lay the cable in the appropriate position for installing.
Fix the cable with cable ties into the engine compartment.

Finally, connect the Powerrail 5 to the wire harness.

The connectors must lock into place so that a secure connection is guaranteed.

3



3



3

