



**squadrasportiva**  
by **NOVITEC**



# Mounting Guidelines

## Novitec GP1



**abarth**sportiva



**alfa**sportiva



**fiat**sportiva

# Attention! Important Information!!!



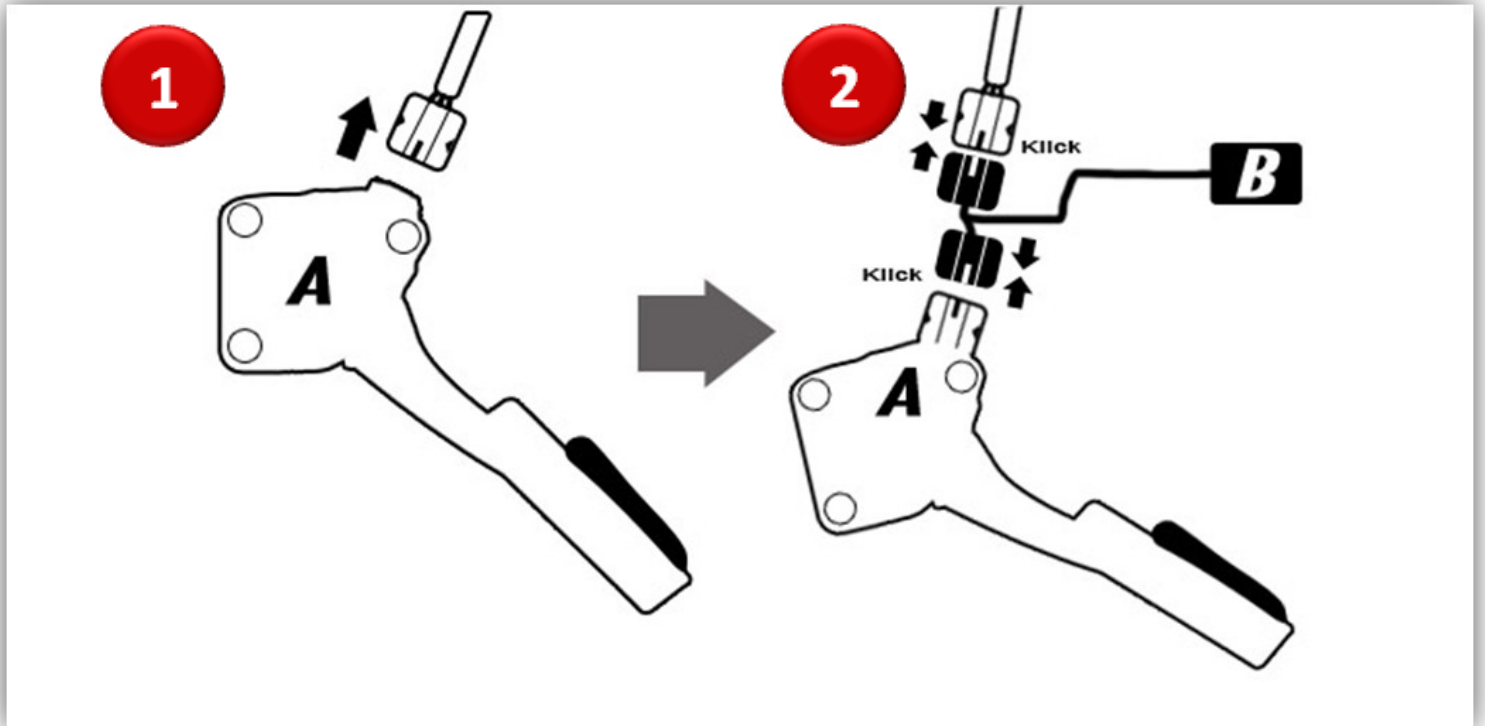
1. Switch off the ignition before installation!
2. Remove the ignition key!
3. Wait at least 5 minutes prior to the installation!
4. The steps are to be observed in that order!



To prevent damage to the cars electronic components,  
it is imperative that you have taken appropriate measures  
to ensure against electronic discharge

The Novitec GP1 must be installed where it is absolutely waterproof  
and free from vibration.

In no case are you to carry out any modifications to the Novitec GP1 .



1. Find the accelerator pedal sensor in the footwell. It is located directly on the accelerator pedal (A).
  - 1.1. Remove the plug from the accelerator pedal.
2. Now attach the plug from the Novitec GP1 harness (B) to the accelerator pedal.
  - 2.1. Afterwards connect the Novitec GP1 plug to the harness.
  - 2.2. Then move the Novitec GP1 and the switch into the appropriate position.

### **ATTENTION!!!**

It is required to connect the Novitec GP1 in the above given order.  
The cable should in no way impare the movement of the pedals.

## The switch functions



Inactive: Original gaspedal signal

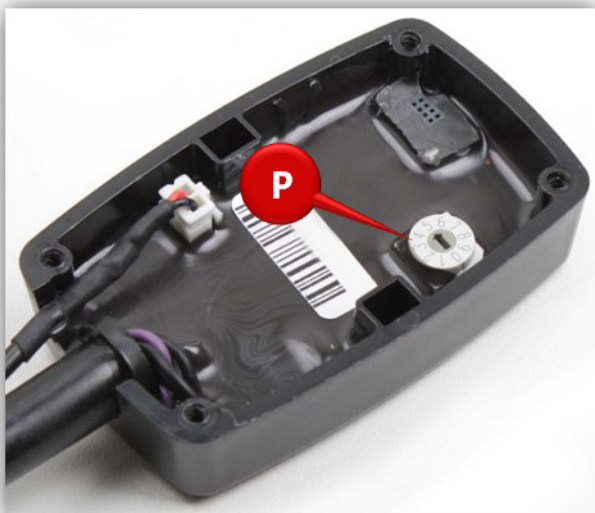
Green: 40% more direct response

Red: 75% more direct response

## ATTENTION!!!

**Never press the switch during acceleration!**

Note: Delivery status of the Novitec GP1 is dynamic.



Inside the box is a potentiometer (P) with which you can adjust the feel as you like it.

Delivery status of the Novitec GP1 is set in position 5.

Turning the potentiometer to level 9 increases the response of the levels Dynamic and Sporty by about 30%.

At Level 1, the respective response is reduced by approximately 30%.